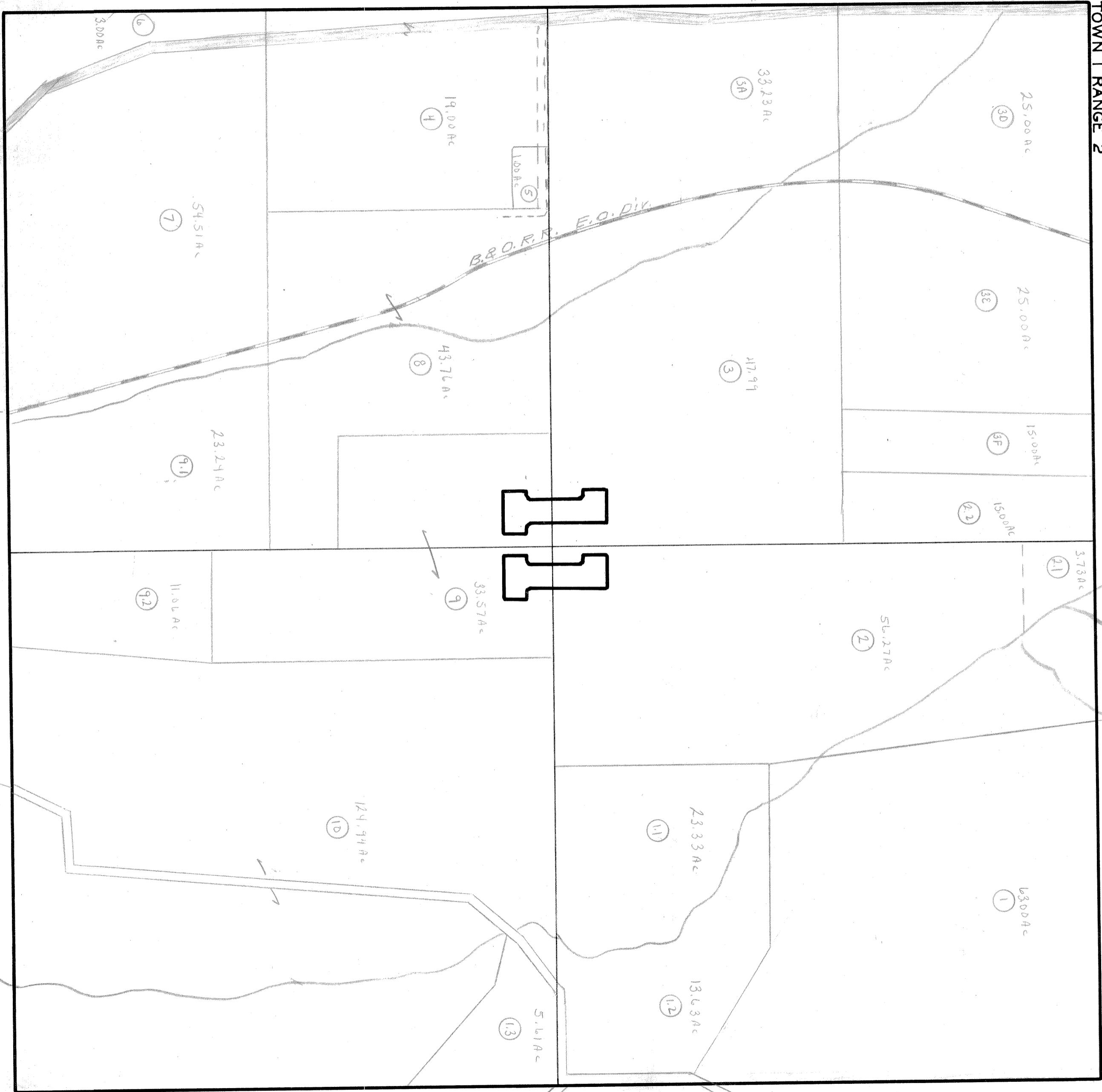


RICHLAND

TOWN 1 RANGE 2

285



III

B. & O. R. R. E. O. DIX

100 Ac

T-90

T-53

285

T-53

3,000 Ac

6

54,510 Ac

7

23,240 Ac

9,11

11,060 Ac

9,2

19,000 Ac

4

43,760 Ac

8

33,570 Ac

9

124,940 Ac

10

5,610 Ac

13

23,330 Ac

11

13,630 Ac

12

33,233 Ac

3A

417,999 Ac

3

25,000 Ac

30

25,000 Ac

32

15,000 Ac

3F

15,000 Ac

22

3,730 Ac

21

56,270 Ac

2

6,300 Ac

1

780 Ac

3B

3C